

## Building Starts On Vets' Hall

Construction started last week on a new lodge hall for the Filipino-American Veterans' Association at 2926 Market St.

The 1-story, 50-by-75-foot building, of frame and stucco construction, is being erected at an approximate cost of \$23,000 by O. D. Arnold & Sons, members of the San Diego Chapter, Building Contractors Association of California.

Arnold said the structure would include clubrooms, a dancing hall, kitchen and offices. Completion is expected within 60 days.

The Arnolds also are constructing for themselves an 8-unit, 3-story apartment house at 3526 India St., at a cost of \$45,000.

## House Count Sought

WASHINGTON, April 30 (Special)—A new census of the nation's housing supply and its condition was urged today by James M. Ashley, president of the Producers' Council, national organization of building products manufacturers.

## DIFFERENCE IN WOODS

Exterior paints last longer on woods such as redwood and western red cedar than they do on resinous woods, such as yellow pine and Douglas fir.

citrus groves into tracts of 2 to 5 acres each with a view building site on each tract. The proposed development is to be known as "Green Acres," it was announced.

Like many things in this modern world, the ancient art of making adobe brick has gone mechanical. This is an adobe mud-mixing machine at Longview Acres, near Escondido, where a development for 100 adobe homes has been started. Conveyor takes earth to mixing trough. Another contraption stamps out blocks. The plant's capacity is about 10,000 bricks a day.

## Construction Begins on 100 Adobe Homes in Rural Tract

ESCONDIDO, April 30 (Special)—Adobe construction of an entire rural village that may include as many as 100 homes is under way south of Escondido.

The unusual country subdivision, made up of home sites of 1 and 2 acres each will be restricted to the Spanish-hacienda type of houses, built from the soil by a new mechanical process that speeds up the manufacture of adobe brick.

Ten of the houses already are under construction near the shoreline of the now-dry Lake Hodges. A \$200,000 motor hotel and shopping center are planned for the village.

## LONGVIEW ACRES

The development, known as Longview Acres Estates, is being undertaken by Lawrence R. Green, avocado and citrus fruit grower who owns the land, and Charles H. Paxton, adobe builder. The two have organized the Adobe Brick Manufacturing Co., to produce the brick at the site. The houses are being built by the Adobe Construction Co., a La Jolla firm headed by Paxton.

A new type of mechanized adobe plant, which Paxton said is capable of producing 10,000 brick a day, is now in operation at the property, adjoining Highway 395. The plant is located 3 miles south of Escondido and 1 mile north of the Lake Hodges bridge.

## REDUCES LABOR

The new process cuts drastically into the man hours of labor needed to manufacture the hand-formed block. Machines do most of the work, even stamping out the brick and laying them in the sun to dry.

A machine first digs the earth and carries it to a plant which mixes oil with the dirt and stirs it into an adobe mud. From a

hopper, the mud is delivered to another carrier which transports the mixture to a portable contraption that moves down the line, molding the bricks and depositing them on rolls of paper to keep the brick clean.

## IN UNITS OF 10 EACH

This plant, formerly owned by Foster & Kleiser Co., who operated it under the patented name of "Caladobe," was moved here from Fresno.

Paxton said the adobe homes would be built in units of 10 each. The 10 dwellings now under construction represent four distinct types of 2-and-3-bedroom homes, ranging from 900 to 1100 square feet. Each, however, will include outdoor patios with built-in barbecues, fireplaces, roofs of mission tile and quarry-tile floors. Each residence also will have an attached car port. Home laundries and dish-washing units are provided in the houses which are expected to sell from \$9500 to \$15,000, depending on the size and location.

The new tract is arranged to preserve the country atmosphere and each site will have at least 1 acre, some of them 2 acres, to provide ample room for gardening and fruit growing. Some of the lots border the anticipated shore line of the proposed Super Lake Hodges.

## ON PLANNING BOARDS

The motor hotel and shopping center project is on the planning boards, Paxton said. It will be a 2-story structure with 34 units and a large lobby, but also will be in keeping with the Spanish adobe style of architecture. Paxton said a \$12,000 swimming pool, tennis courts and nearby riding stables are included in the motor hotel project, which will adjoin the new Highway 395. The developers

hope to build it into a winter resort.

Green, president of the newly-formed Brick Manufacturing Co., later may develop part of his

*... Now!... The Home Loan You Need!*

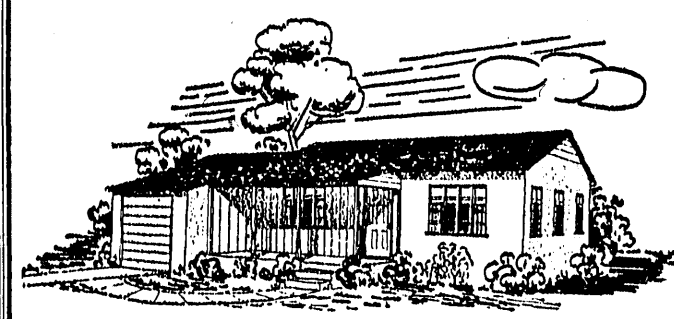
... to BUY, BUILD, modernize or refinance your home ... it's low-cost liberal ... brokerage-free and commission-free. *Come, see!*

*There IS a home-loan for you ... as helpful to the borrower as our high-dividend rate is to the saver.*

**Central Federal Savings Loan Assn.**

1015 7TH AVE. Above Broadway

See It Today your Lifetime Home! NOW UNDER CONSTRUCTION



**BRAND NEW 1949 MODELS**

2 Bedroom . . . \$1450 Down . . . \$48.56 Month  
3 Bedroom . . . \$1750 Down . . . \$53.16 Month

**VETERANS — AS LOW AS \$500 DOWN!**

Including Lot, Garage, and All Utilities  
Monthly Payments Include Insurance and Taxes  
FHA INSPECTED—APPROVED—FINANCED

—Select Your Lifetime Home Now!

Only a small deposit required for you to make your selection Now! Then watch your house grow! Your choice of color combinations and other alternates—if you select now.

LOCATION: On 54th Street, a few blocks south of University Ave.

Salesman on Duty Daily and Sunday at Tract  
Or Call Jackson 5155 for Appointment and Information

**JACKSON & SCOTT, Inc.**  
— BUILDERS —

a-28 San Diego 12, Calif. Sunday, May 1, 1949 \* The San Diego Union

## OUTDOOR LIVING

### Porch Can Be Asset To American Dwelling

NEW YORK, April 30 (Special)—The new White House balcony may be the nation's most talked-about porch but to the average home owner it's not half as important as his own. During mild months, the up-to-date porch can play as important a role in family life as any part of the house.

A few intelligently planned additions can transform the non-productive porch into an asset that will supply extra summertime pleasure and convenience, no matter what the weather. Here are some Tile Council of America suggestions for features that can add utility and good looks to the "outside room" whether it is a spacious veranda, a backyard terrace or a stamp-sized porch:

1—Weather proofing is a

must. Bamboo roll screens will keep out rain. Moisture-proof quarry tile floors are recommended. Metal or wicker furniture will retain good looks despite constant exposure to weather.

2—Bookcases, shelves and settees built into the house wall provide maximum space and add a modern look.

3—The porch makes an ideal sitting or reading room when properly lighted and screened. Two or three electricity outlets will give it lighting just as serviceable as the living room.

4—Bright colors will add a cheerful note. Walls and furniture in pastels that harmonize with the room off the porch are ideal. Light colors will make the pint-sized, closed-in porch seem larger.

## BEAUTIFUL HOMES AVAILABLE NOW!

### G.I. AND FHA FINANCED

Low Down Payment — Reasonable Monthly Payments

**TWO BEDROOM**  
1 Car Garage  
**\$8400 TO \$8600**  
INCLUDING LOT

These attractive 2-bedroom homes are designed to provide the utmost in convenience. Floor area 750 square feet. All have floor furnace heat, 20-gallon hot water heaters, tile sink, oak floors. Fenestra steel windows.

**THREE BEDROOM**  
2 Car Garage  
**\$8750 TO \$10,000**  
INCLUDING LOT

Frame-stucco and some half stucco and half shakes. Plans provide the most convenient 3-bedroom house possible. Floor area 1000 square feet. Floor furnace, 20-gallon hot water heater, oak floors, all-steel window sash, 2-car garage, tile sink, wide level lot.

Just 12 of these available.

**NO LOTS TO BUY! NO EXTRAS TO PAY FOR VETERANS** Pay only \$720 to \$1000 down, plus usual charges and \$67 to \$61 per month, including interest and taxes. We pay \$200 of normal and usual loan charges.

## WESTWOOD HILLS SUBDIVISION

108 UNITS UNDER CONSTRUCTION

Location 1/2 mile north of intersection of Federal Blvd. and Encino Ave., at 64th Street. Only 4 miles from downtown San Diego. Paved streets, sewers, water, gas and lights. Markets, stores and open air theatre nearby. Good transportation, school bus for children.

SEE THESE BEAUTIFUL HOMES & COMPARE!

**O. D. ARNOLD & SONS**  
6122 EL CAJON BOULEVARD

Tract Office MAIN 4-5929 Evening Phone RANDOLPH 6146

## NEW LOW-COST WAY TO COVER DRAB WALLBOARD

"Brush on a New Wall" with easy-to-use **DRAMEX** ... one coat covers and colors

It's more than a paint ... it's more than a plaster ... it's **DRAMEX!** Watch a brand-new wall surface flow from your brush. Drab wallboard comes to life, ugly plaster cracks vanish. Beautiful decorator colors won't streak or fade. Easy to use. Quick drying—and so inexpensive!

GET YOUR FREE **DRAMEX** COLOR CARD FROM

C. H. BENTON INC. 2186 Kettner Boulevard  
CITY PAINT COMPANY 3012-14 El Cajon Boulevard  
GENERAL PAINT CORP. 302 B Street  
INDIA PAINT & LACQUEE COMPANY 3201 Adams Ave.

NATIONAL LEAD COMPANY 2884 University  
PITTSBURGH PAINT STORE 886 C Street  
SAN DIEGO GLASS & PAINT Market at 9th  
SULLIVAN HARDWOOD LUMBER CO. India at G Streets

WHITNEY'S 916-6th Avenue

**DRAMEX Interior Finish** Perfected by the makers of BONDIX CEMENT PAINT

The Reardon Company, St. Louis, Chicago, Los Angeles, Bayonne, N. J., Montreal

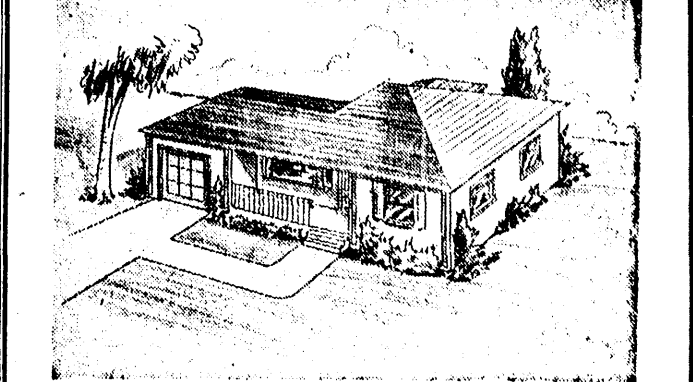
## Hold Everything!

The **RIGOLI HOME**

Built for FHA and Vet Financing  
NOW UNDER CONSTRUCTION  
Will Sell for Only

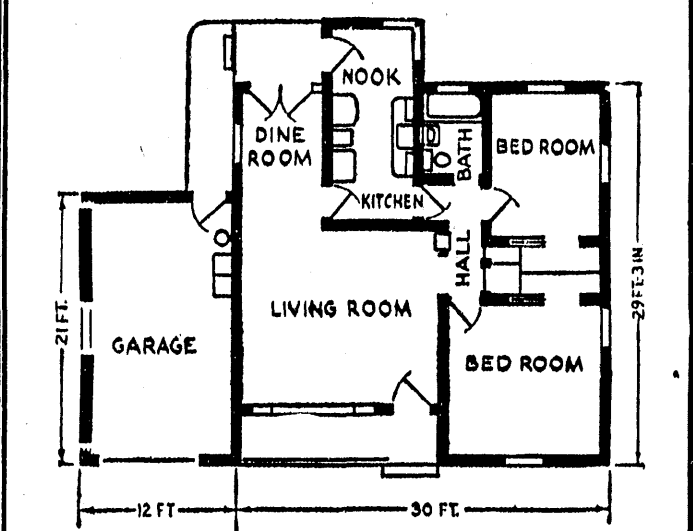
**\$5,950 TURN KEY**

On Your Lot to a 5' Slope  
Except for Your Fire Insurance and Loan Fees



JUST IMAGINE!

- A 2-bedroom home, of modern standard construction, having 852 sq. ft. of house, plus a 12x21-ft. garage, 4x16-ft. covered front porch, French doors leading off dining room to a patio slab for outdoor living. Also driveway and walks.
- Two-inch sub-floor, covered with No. 1 hardwood. Plaster inside, stucco outside, with a snowrock pitched roof.
- Large living room, having a 10-foot overall picture window. Full standard bath with ceramic tile shower high.
- Custom-built kitchen cabinets. Large bedrooms, spacious closets. Separate breakfast nook off kitchen.
- All steel casement windows with full screens; 35,000 BTU Hamil dual wall furnace; double laundry trays and automatic hot-water heater in garage.
- YES! Turn Key means NO EXTRAS; just \$5950, and your loan and fire insurance fees.
- Full price of \$5950 also includes Builder's Control Service, Inc. fee to guarantee completion in accordance with plans and specifications.
- And last but not least; have you been turned down by FHA, etc., because your take-home pay was insufficient to qualify for a loan? If so, your problem is over. The low turn key price of the Rigoli home enables you to qualify due to the small down and easy monthly payments.



852 SQ. FT. LIVABLE AREA

ACT NOW!

SEE IT UNDER CONSTRUCTION

LET US CALL FOR YOU ... Just Dial a

**RIGOLI BEACH OFFICE**

1958 Garnet, East of Academy . . . . . H-8-2897  
Pacific Beach Drive at Mission . . . . . H-8-3993  
4427 Ingraham, off Garnet . . . . . H-8-3469  
Eves. H-8-2897, H-8-6140, H-8-3753, H-8-3069  
J-2046—M-2481—J-7652—W-7-1325—B-6337  
H-8-8062—T-5317—H-2-2401—B-0365—F-7263

**COMPARE OUR PRICES!**

## Asphalt Tile

9" x 9" SQ.

**3c**

All First Quality Leading Brand Fresh Stock Colors All the Way Thru. Long Wearing

LAY IT YOURSELF AND BANK THE DIFFERENCE  
We Give You Free Easy Instructions

**WHY PAY MORE?**

**Lawrence Cut-Rate Floors**

CUT-RATE PRICES

**3065 REYNARD WAY**

Open Sundays and Evenings  
THU 9 P.M.—Closed Mondays

**WE GO UPSIDE DOWN TO PLEASE YOU**

**DON'T MISS SEEING IT!**  
THE SAUNDERS THRIFTY MODEL  
WILL BUILD ON YOUR LOT

**\$6950**

G.I. and F.H.A. FINANCED and APPROVED  
OPPOSITE LOMA THEATRE  
**SAUNDERS and SAUNDERS**  
GENERAL CONTRACTORS

**LUMBER SALE**

SHEATHING 1x6-1x8 . . . . . \$600  
2x4 STUDS . . . . . \$600  
2x8-2x10-2x12 DF S4S-R.L. . . . . \$4900  
2x4 DF S4S-R.L. . . . . \$6900  
KNOTTY PINE SIDING 1x12—"V" JL.—No. 792 . . . . . \$13500  
CLEAR RED-WOOD SIDING Bevel "V" Joint . . . . . \$16500  
SIDEWALL SHAKES . . . . . \$1595 sq. With Undercourse—18"

ABOVE PRICES SUBJECT TO STOCK ON HAND—WE DELIVER

**INDUSTRIAL LUMBER COMPANY**  
4205 PACIFIC HIGHWAY  
CONVAIR PLANT NO. 2—W-B-1104

**4% LOANS ON HOMES**

UP TO 10 YEARS OLD IN SELECTED LOCATIONS

**Lottie L. Crawford AND Victor R. Lundy**  
943 7th Ave. M-3018

**MAKE YOUR OWN BLOCKS**

Build patio walls, etc., at fraction of ordinary cost!

Make your own blocks with this sturdy block machine. You can easily and quickly make perfect 4x8x12 blocks.

It's great fun and \$49.50 only. You'll see money's worth. Order yours now!

CENTURY MANUFACTURING CO.  
1717 Broadway, San Diego 3, Calif.