

Custom Home Is Showcase for Project

A ridge-top showcase for what ultimately will become a 120-unit ocean view community opens today in South San Clemente.

Mariners Point, a project of Douglass-Pacific Corp., is introducing "The Adobe," the first custom home completed on the viewsite development.

Forty-eight of the oceanview lots currently are being offered, priced from \$38,000 to \$60,000, for construction of single-family dwellings expected to range in price from \$100,000 to \$200,000, according to Don G. Anderson, vice president of the San Clemente-based building company.

Each lot has a panorama stretching from the north end of Santa Catalina Island to La Jolla and overlooking the San Clemente Golf Course and surrounding terrain.

Construction of eight homes is scheduled to start next month, Anderson said, with the "one-of-a-kind" homes expected to be completed by June.

The 3,060-square-foot Adobe, priced at \$210,000, is planned on the lines of an open fan with wide-angle vistas designed to take advantage of town and ocean.

The Adobe has taken its name

from the use of adobe brick for the exterior walls and many interior walls. In addition, the roof is of hand-made Mexican tile and outlined with rustic wood.

An imported quarry stone fountain from Guadalajara graces the courtyard with its curving adobe walls and wrought-iron gate.

Wide, tiled steps lead to an arched, covered entry flanked by stained glass windows. Thick, hand-crafted double entry doors of rustic wood open onto a step-down entrance into the fan-shaped living room.

The living room's open-beam ceil-

ing is repeated in every room, thus giving a feeling of contemporary, open spaciousness, but still retaining the flavor of early California.

The Adobe has three bedrooms, a convertible corner study, three full baths and a powder room. There is also an indoor laundry room and a three-car garage with automatic doors.

A highlight of the home is the master suite with its own bath-garden and a large sunken tub plus stall shower, all with ceramic tile.

Cooking Island

The large kitchen and family room are covered with Contrera tile. The kitchen contains a separate cooking island with an interchangeable electric range top/barbecue.

Other appliances included are a microwave oven, a self-cleaning oven, dishwasher, disposer and trash compactor.

More custom features include luminous bathroom ceilings, wall-to-wall carpeting, ranch-style oak cabinets, distinctive Italian hardware and coordinated light fixtures.

Each new home will be landscaped with selected trees, shrubs, and flowers, and each will be different from its neighbors.

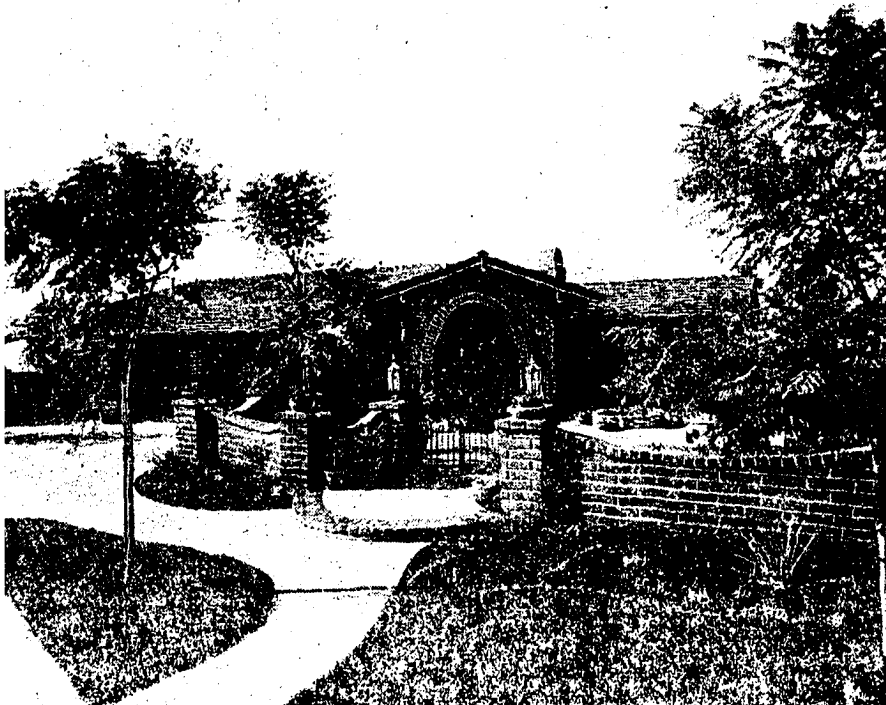
Strict Standards

According to Douglass-Pacific, the Adobe is typical of the strict architectural standards which will be enforced. John C. Douglass Jr. of the construction firm said there would be no homeowner fees or other community charges.

Sixteen different floor plans have been created for the sites by five architects and residential designers. The Adobe is the work of Larry Weir.

Although secluded, Mariners Point is close to Dana Point Marina, beaches, shopping in San Clemente, schools and other community facilities.

The Adobe will be open for inspection from 10 a.m. to dusk daily at 116 Via Toluca. Exclusive sales agent is Mariners Realty.



THE ADOBE' First custom home completed at Mariners Point in South San Clemente.